



**USL Financials** General Ledger can help you to respond to the changing circumstances, make your financial operations more efficient, and improve the accuracy and effectiveness of your financial reporting. It integrates financial information from throughout your organization with real time consistency that results in increased accountability. Easily track and report from multiple perspectives, access critical information that guides strategic planning and demonstrate fiscal responsibility for your entire organization. It integrates financial information and enforces consistency that will translate into increased accountability and faster response.



## FLEXIBILITY

You constantly require the need to overhaul your reporting structure. USL General Ledger is designed to change and grow with your organization. It gives you the flexibility to adapt your reporting structure, without rebuilding your chart of accounts and experiencing a huge data conversion.



## ENSURING ACCURACY IN FINANCIAL OPERATIONS

Full security to enter, edit, post, and approve ledger, budget, and encumbrance. Guarantee balance of debits and credits with system-enforced balancing of all transactions, and validate posting accounts at the time of entry. This cuts down on user error and improves data and transaction accuracy within the system. Maintain audit trails back to source transactions and all file maintenance activity.



## SYSTEM INTEGRATION WITH A SINGLE INFORMATION SOURCE

Seamlessly interface the General Ledger with other modules, including Accounts Payable, Accounts Receivable, and Inventory Manager.



## DOCUMENT MANAGEMENT

Ability to attach documents to ledger entries. Documents can be attached/scanned prior to, during or after ledger entry and retrieved during reporting or inquiry.



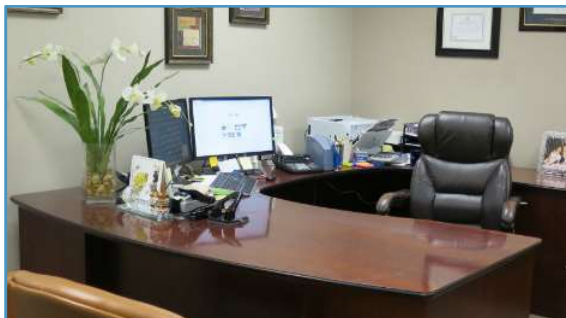
## ONLINE HELP

USL Financials contains context-sensitive, online help for all features and functions of the system.



## WORKFLOW

Workgroups allow departmentalization and different approval paths for transactions.



## KEY FEATURES

### General

- ✓ A multi-fund, multi-fiscal year, multi-fiscal period, double-entry, FASB/GASB compliant fund accounting system that fully integrates with all other USL modules and many third-party applications.
- ✓ Funds and fund groups automatically balanced using one or many account segments.
- ✓ Easy export and import with validation to/from Excel and other Microsoft Office products.
- ✓ Full audit trails and user-defined security.
- ✓ Optional Workgroups for distributed processing.

### General Journal

- ✓ Allows administrator review, reassignment and posting.
- ✓ Supports automatic reversal for accrual entries.
- ✓ Supports an unlimited number of entries per transaction.
- ✓ Edit lists and posting registers are automatically spooled to disk, assuring the integrity of the audit trail.
- ✓ Easily imported from Excel or ASCII text with full validation.
- ✓ Option to automatically duplicate or reverse any journal entry.

### Workflow

- ✓ Workgroups allow departmentalization and different approval paths for transactions.
- ✓ Multiple batches have a 1 tier approval between user and supervisor.
- ✓ Supervisory redirection or reassignment of batches.
- ✓ Optional email notifications.

### Year-end Close

- ✓ Closing process is quick and easy.
- ✓ Unlimited years can be open simultaneously and years can be easily re-opened after closing.
- ✓ New year processing can begin with full carry forward of balance data.

## KEY FEATURES, CONT.

### Reports

Full spectrum of reports and queries that are FASB/GASB compliant, audit-ready and meet the numerous requirements of funding sources, internal management and your board. Instant access to critical financial data across periods and fiscal years. Fully integrated with Microsoft Office suite of products. Reports scheduled and sent via email, with any email client, in PDF, Word or Excel format. Advanced reporting features through fully interfaced third party software: SSRS, SQL Server Reporting Services.

- ✓ Standard Access/Crystal Reports
  - ✦ Balance Sheet
  - ✦ Income Statement
  - ✦ Trial Balance
  - ✦ Actual vs. Budget
  - ✦ Annualized Actual vs. Budget
  - ✦ Export GL to Worksheet
  - ✦ Source Cross Reference report (identifies interfaced source transactions for audit trail purposes)
- ✓ Datasheet Reports with drill down
  - ✦ View Account Balances
  - ✦ Account Activity
  - ✦ Transaction Activity
- ✓ Flexible, Built-in Report Writers
  - ✦ Quick Reports
  - ✦ Excel Financials Reports
  - ✦ Distributed Reports

### System Integration

- ✓ Transactions are posted directly to the General Ledger through General Journal. Subsidiary ledger transactions from interfaced modules are transferred via the Transfer Distributions function. GL accounts, accounting periods and budgets are verified through the Control System module.
- ✓ USL Financials interfaced modules
  - ✦ Accounts Payable
  - ✦ Accounts Receivable
  - ✦ Inventory Control
  - ✦ Purchase Order
  - ✦ Purchase Requisitions
  - ✦ Bank Reconciliation
  - ✦ Project Accounting
  - ✦ Budget Preparation
  - ✦ Allocations

### Security

- ✓ Full USL Database, Module, Menu, Function, Action and Account Level security options relative to the system security.
- ✓ Full security by Delivery Location in PO and PQ.
- ✓ Departmental Security via Workflow in all modules.
- ✓ Security by Project, Sub-Project, and Funding Source (Grant).

### Minimum System Requirements

#### SERVERS

##### File Server

- ✦ Dual Core, 2.3 GHz or better
- ✦ 4GB RAM (32-bit Windows Server) or 8GB RAM (64-bit Windows Server) sized by need
- ✦ Windows Server 2008 R2 – 2019/R2 (64-bit recommended)

##### SQL Server

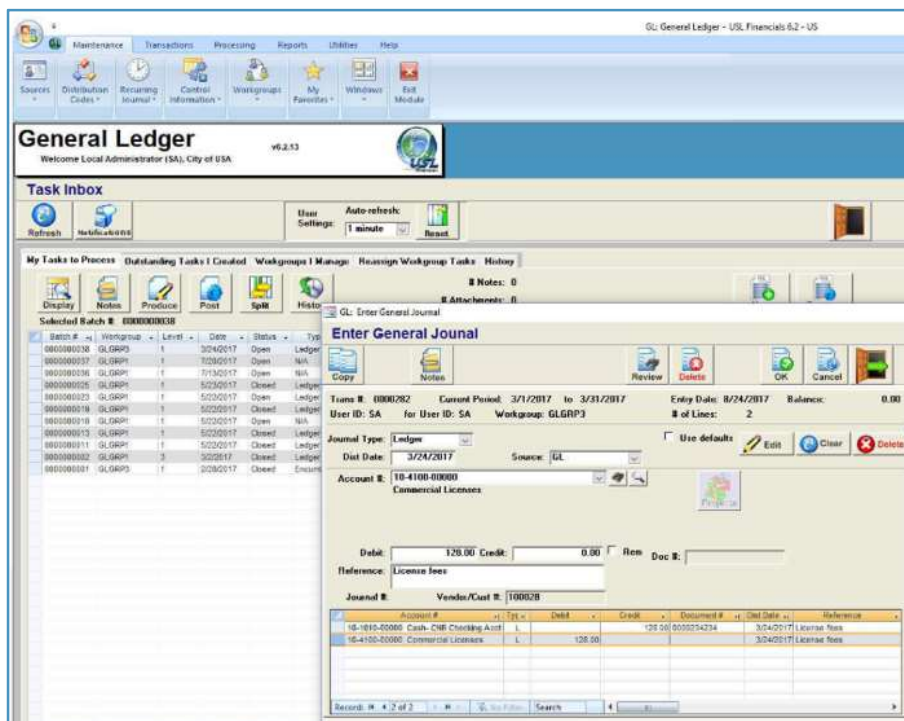
- ✦ Microsoft SQL Server 2008 R2 – 2019 (64-bit recommended)

##### RDS/Terminal Server (if utilized)

- ✦ Dual Core, 2.3 GHz or better
- ✦ 4GB RAM (32-bit Windows Server) or 8GB RAM (64-bit Windows Server) sized by user count
- ✦ Windows Server 2008 R2 – 2019/R2 (64-bit recommended)
- ✦ Microsoft Office Pro 2010 – 2019/365 (32-bit only)

#### CLIENT WORKSTATIONS

- ✦ Core 2 Processor, 2.3 GHz or better
- ✦ 2GB RAM or better
- ✦ Windows 10 Pro/Enterprise (64-bit recommended)
- ✦ Microsoft Office Pro 2010 – 2019/365 (32-bit only)



Contact us:

USL Financials, Inc.  
900 South Washington Street  
Falls Church, VA 22046  
(800)800-0768

Maurice Giguere  
Vice President, Sales  
(703)635-3837