



USL Financials Project Accounting module has features specifically designed for the not-for-profit or government market. It features visibility into what needs to be done and when with centralized task tracking for projects and grants. Spending is monitored and budget plans track spending as the project or grant is used. You can stay on top of deadlines and easily collaborate with other team members to deliver on conditions and milestones. The Project Accounting module has the ability to describe financial events by identifiers or labels, including funding source, vendor taxpayer identification numbers, addresses, and project identifiers.



FLEXIBILITY

Unlimited number of projects or grants, with support for sub-projects.



BUDGETING

Ability to budget across projects, sub-projects, and funding source awards.



ALLOCATIONS

User-configurable allocations for generation of IDC, Revenue Recognition, and Sponsor Billing.



DOCUMENT MANAGEMENT

Ability to attach documents to projects, sub-projects, and funding source awards.



ONLINE HELP

USL Financials contains context-sensitive, online help for all features and functions of the system.



INTEGRATION

Ability to process transactions for project accounting in other core modules, such as Accounts Payable, Accounts Receivable, Purchase Orders, Purchase Requisitions, Inventory Manager, and General Ledger.



KEY FEATURES

General

- ✓ Associate accounting entries with projects or grants and flag reimbursable costs.
- ✓ Track funding details and tie deliverables to tasks.
- ✓ Gather eligible charges for reporting and billing with the click of a button.
- ✓ Progress monitoring helps you ensure timely delivery of your performance requirements.
- ✓ Clear audit trail for qualified expenses by asserting expenses as reimbursable during transaction entry.
- ✓ Report and compare budget to actuals on project and grant periods that differ from or cross your organization's fiscal year.
- ✓ Detail for reporting at the account and journal level.
- ✓ Project/grant information at the account level is included in all edit lists for posting.
- ✓ All project/grant reporting that includes account level information
- ✓ Supports optional sub-projects, which are subordinate to projects and grants and provide for detail reporting of activity with-in a project.
- ✓ Unlimited Contacts that can be assigned to projects and grants and sub-projects.
- ✓ Distribution accounts validated by Projects and grants, sub-projects, and funding sources.
- ✓ Projects and grants, sub-projects, and funding sources support optional starting and ending dates.
- ✓ Project-level security by user.
- ✓ Notes may be associated with the definition of projects and grants and also at every transaction.
- ✓ Numerous user defined fields for projects and grants, sub-projects and funding sources.

Allocations

- ✓ User-configurable indirect cost allocations, using Rate-method (negotiated rate, specific rate, or markup) or Actual-method.
- ✓ Rate vs. Actual Comparison reporting.
- ✓ Enable the best revenue recognition method for each revenue stream.
- ✓ Generate custom invoices for billing.

KEY FEATURES, CONT.

Budgets

- ✓ Project and grants budgets cross fiscal years and are associated uniquely with a given project.
- ✓ Project and grants budgets can be entered at the project or sub-project level.
- ✓ Project and grants budgets mapped to fiscal years for organization budget management and reporting.
- ✓ Budgets recorded at Budget Category and/or Account level.
- ✓ Individual Categories can be identified as being related to Direct or Indirect Costs.

Reports

Provide powerful on-line inquiry and drill-down tools:

- ✓ Web reporting using Microsoft Reporting Services.
- ✓ Projects and grants can optionally be tracked as a full sub-ledger with balance sheet as well as P&L Reporting.
- ✓ Transaction reports organized by project or account, with drill-down (drill-back) to GL, AP, AR, PO, PQ, and IC details.
- ✓ Datasheet reports allow ad-hoc reporting, sorting and filtering on any project or grant, sub-project, and funding source column, including user-defined information.
- ✓ Excel Financials for PA Financial Statements offers balance sheets as well as P&L reports.
- ✓ Web reporting allows dynamic interaction with off-site Principal Investigators.

System Integration

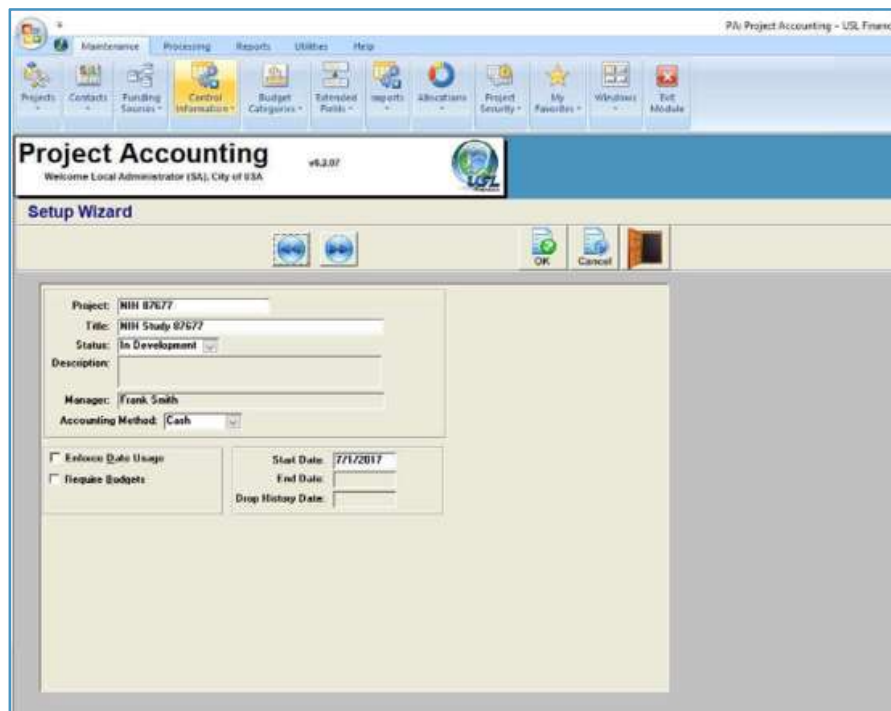
- ✓ Transactions are posted directly to the General Ledger through General Journal. Subsidiary ledger transactions from interfaced modules are transferred via the Transfer Distributions function. GL accounts, accounting periods and budgets are verified through the Control System module.
- ✓ USL Financials interfaced modules
 - ✦ General Ledger
 - ✦ Accounts Payable
 - ✦ Accounts Receivable
 - ✦ Inventory Control
 - ✦ Purchase Order
 - ✦ Purchase Requisitions
 - ✦ Bank Reconciliation
 - ✦ Budget Preparation
 - ✦ Allocations

Security

- ✓ Full USL Database, Module, Menu, Function, Action and Account Level security options relative to the system security.
- ✓ Full security by Delivery Location in PO and PQ.
- ✓ Departmental Security via Workflow in all modules.
- ✓ Security by Project, Sub-Project, and Funding Source (Grant).

Minimum System Requirements

- ✓ SERVERS
 - File Server
 - ✦ Dual Core, 2.3 GHz or better
 - ✦ 4GB RAM (32-bit Windows Server) or 8GB RAM (64-bit Windows Server) sized by need
 - ✦ Windows Server 2008 R2 – 2019/R2 (64-bit recommended)
 - SQL Server
 - ✦ Microsoft SQL Server 2008 R2 – 2019 (64-bit recommended)
 - RDS/Terminal Server (if utilized)
 - ✦ Dual Core, 2.3 GHz or better
 - ✦ 4GB RAM (32-bit Windows Server) or 8GB RAM (64-bit Windows Server) sized by user count
 - ✦ Windows Server 2008 R2 – 2019/R2 (64-bit recommended)
 - ✦ Microsoft Office Pro 2010 – 2019/365 (32-bit only)
- ✓ CLIENT WORKSTATIONS
 - ✦ Core 2 Processor, 2.3 GHz or better
 - ✦ 2GB RAM or better
 - ✦ Windows 10 Pro/Enterprise (64-bit recommended)
 - ✦ Microsoft Office Pro 2010 – 2019/365 (32-bit only)



Contact us:

USL Financials, Inc.
900 South Washington Street
Falls Church, VA 22046
(800)800-0768

Maurice Giguere
Vice President, Sales
(703)635-3837